

BuildPro™
WELDING TABLES

BuildPro™
WELDING TABLES

**Strong
Hand
Tools**
Better Tools. Better Price.™

Visit Us Online at
www.stronghandtools.com

Ексклюзивний дилер в Україні:

Роботікс Інженерія

Вул. Святошинська, 34
тел. (044) 707-16-16, 407-16-17
факс: (044)407-18-30
www.robotics.kiev.ua

Authorized Distributor

StrongHandTools™
Better Tools. Better Price.

Customer Service

Toll Free : 800.989.5244
Tel : 562.949.8625
Fax : 562.949.4875
sales@stronghandtools.com

Address

7141 Paramount Blvd.,
Pico Rivera, CA 90660

© Copyright 2009. All Rights Reserved.

TM16.1

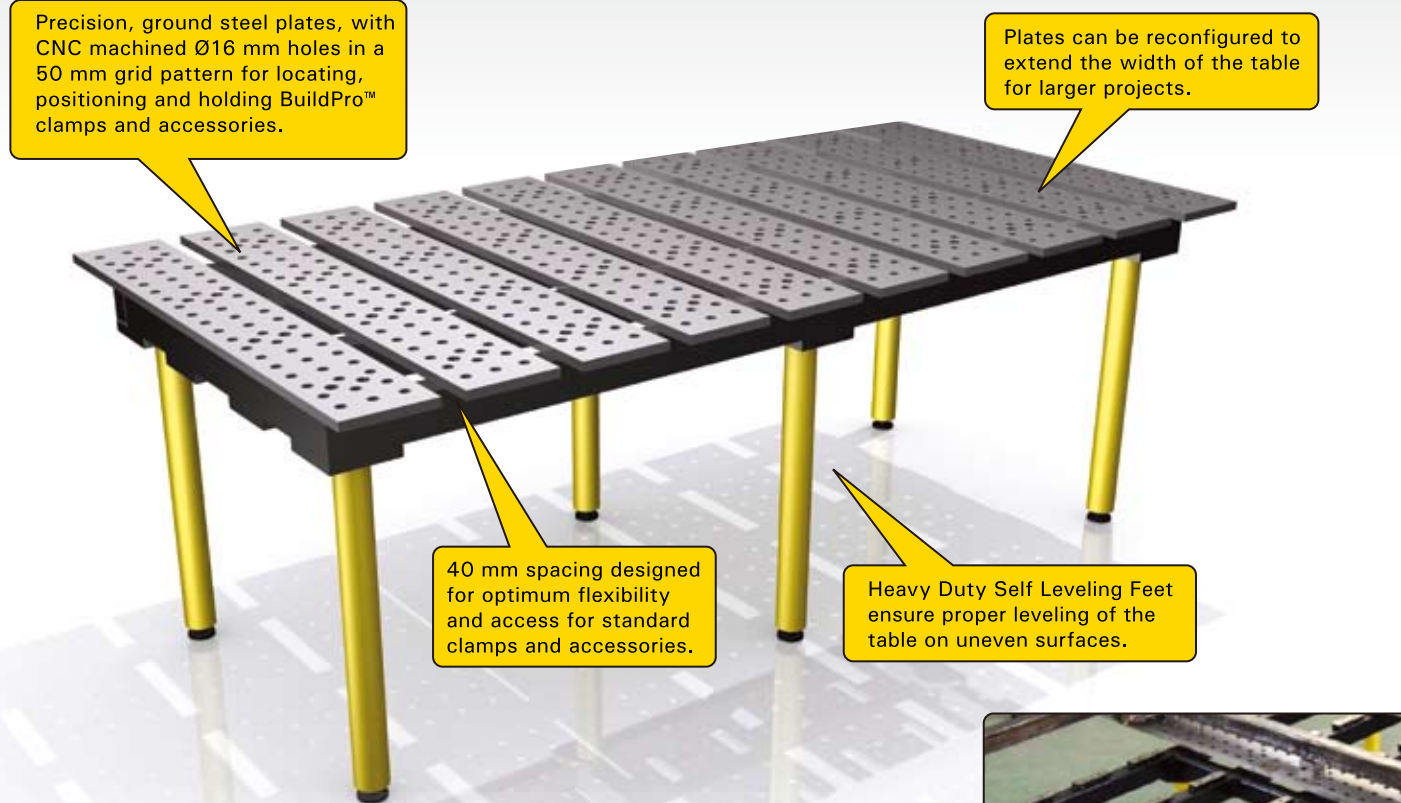
FASTER Fixturing.
CONSISTENT Results.
GREATER Productivity.

www.stronghandtools.com

Dramatically improve productivity and work quality...

The BuildPro's modular design gives you the flexibility to adapt to each new project, big or small. You'll work more safely, and more efficiently, so you can increase both your productivity, and the quality of your work.

BuildPro™ Features



- 57 holes per plate.

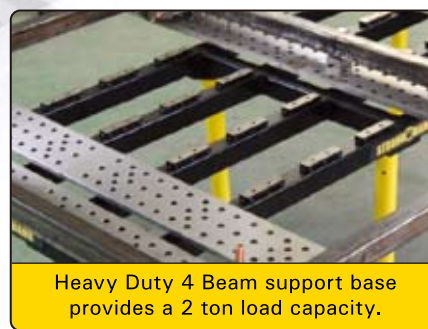
BuildPro™ Tabletop Accuracy

- Table flatness : 0.3/ 1,000 mm
- Hole diameter : Ø16 +0.043 mm
- Hole spacing : 50±0.031 mm
- Plate thickness : 16 mm

Optional Nitrided (Heat-Treated) Tabletop

The BuildPro™ is available with a protective nitrided tabletop. The nitriding (heat-treating) process is a mechanical polish and post salt bath oxidative treatment. The benefits of this process include: **Anti-Spatter, Corrosion Protection, and Resistance to wear, lubricity and fatigue strength.**

- Surface hardness : Equivalent to HRC52
- Nitriding case depth : 0.01-0.02 mm
- Coefficient of friction : 0.37
- Heat resistance : 700°F / 375°C



The table you'll rely on everyday...

The very practical, modular design of the BuildPro™ Table makes it easy to set-up and tear down for the job at hand, big or small. Save time and money by holding, positioning, and locating quickly and easily with a wide variety of BuildPro™ clamps and accessories.

The BuildPro™ Table was designed to fit in with the way you work now, making your work even easier to complete. No training required. The BuildPro™ will help you decrease fixture set-up time, and increase work efficiency.

BuildPro™ Models

| | Part No. | Table Height | Tabletop Dimension | Plate Thickness | Hole Diameter | Slot Distance | Table Capacity | Table Weight |
|----------|-----------|--------------|--------------------|-----------------|---------------|---------------|----------------|--------------|
| STANDARD | TMA62010 | 900 mm | | | | | | 405 kg |
| | TMB62010 | 750 | 1,960 x 1,000 mm | 16 mm | Ø16 mm | 40 mm | 2,000 kg | 400 |
| | TMC62010 | 600 | | | | | | 395 |
| NITRIDED | TMQA62010 | 900 | | | | | | 405 |
| | TMQB62010 | 750 | 1,960 x 1,000 | 16 | Ø16 | 40 | 2,000 | 400 |
| | TMQC62010 | 600 | | | | | | 395 |

| | Part No. | Table Height | Tabletop Dimension | Plate Thickness | Hole Diameter | Slot Distance | Table Capacity | Table Weight |
|----------|-----------|--------------|--------------------|-----------------|---------------|---------------|----------------|--------------|
| STANDARD | TMA61210 | 900 mm | | | | | | 253 kg |
| | TMB61210 | 750 | 1,160 x 1,000 mm | 16 mm | Ø16 mm | 40 mm | 1,200 kg | 250 |
| | TMC61210 | 600 | | | | | | 247 |
| NITRIDED | TMQA61210 | 900 | | | | | | 253 |
| | TMQB61210 | 750 | 1,160 x 1,000 | 16 | Ø16 | 40 | 1,200 | 250 |
| | TMQC61210 | 600 | | | | | | 247 |

BuildPro™ Plates & Legs

| | Part No. | Description | Weight |
|----------|-------------|--|--------|
| STANDARD | TM62010 | 1,960 x 1,000 mm Tabletop without legs | 375 kg |
| | TM61210 | 1,160 x 1,000 mm Tabletop without legs | 235 |
| | TM62010-01 | Individual Plate | 18 |
| NITRIDED | TMQ62010 | 1,960 x 1,000 mm Tabletop without legs | 375 |
| | TMQ61210 | 1,160 x 1,000 mm Tabletop without legs | 235 |
| | TMQ62010-01 | Individual Plate | 18 |

| | Part No. | Description | Weight |
|--|----------|-----------------------------|--------|
| | TML31 | Table Leg for 900 mm height | 5 kg |
| | TML25 | Table Leg for 750 mm height | 4 |
| | TML19 | Table Leg for 600 mm height | 3 |

Ball Lock Bolts

These Ball Lock Bolts position and hold BuildPro™ accessories. The balls engage underneath the table to lock into position. Choose from fixed, flush and adjustable versions.



| Part No. | Bulk Qty. (10) | Type | Description | Weight |
|----------|----------------|------------|---|---------|
| T65010 | T65011 | Fixed | For connecting 2 accessories together. | 0.07 kg |
| T65015 | T65016 | Fixed | For connecting an accessory to the tabletop | 0.08 |
| T65020 | T65021 | Flush | For connecting 2 accessories together | 0.05 |
| T65025 | T65026 | Flush | For connecting an accessory to the tabletop | 0.04 |
| T65050 | T65051 | Adjustable | Adjustable bolt from 22.5 mm to 32 mm | 0.11 |
| TMS5101 | - | - | Spare parts kit for Ball Lock Bolts | 0.01 |

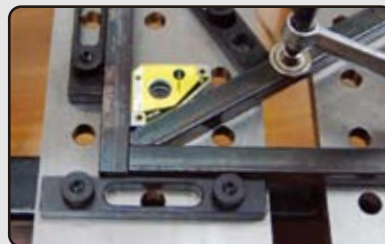


Straight Edge Stops

Long slots make these precision machined Straight Edge Stops infinitely adjustable in fixturing applications and squaring up parts.



| Part No. | Dimension | Holes | Slot Length | Weight |
|----------|------------------|-------|-------------|---------|
| T60505 | 150 x 25 x 12 mm | 1 | 92 mm | 0.18 kg |
| T60510 | 200 x 25 x 12 | 2 | 2 x 66 | 0.23 |
| T60515 | 250 x 25 x 12 | 6 | 91 | 0.30 |



Right Angle Plates

These precision machined plates hold materials at right angles. The holes and slots allow for infinite adjustments in fixturing. For heavy duty applications, choose the Riser Blocks.



| Part No. | Dimension | Holes | Slot Length | Weight |
|----------|-----------------|-------|-------------|---------|
| T60304 | 50 x 75 x 25 mm | 1 | 50 mm | 0.16 kg |
| T60305 | 100 x 75 x 25 | 3 | 50 | 0.18 |
| T60310 | 100 x 150 x 25 | 3 | 125 | 0.30 |
| T60320 | 200 x 150 x 25 | 7 | 125 | 0.47 |
| T60330 | 300 x 150 x 50 | 11 | 125 | 1.82 |



Riser Blocks - Heavy Duty

These precision machined Riser Blocks, with accurate bored holes, allow you to elevate a workpiece to any desired height. Increase the working height or width of the table by mounting the blocks vertically or horizontally. Cross-join the blocks for use as a beam. Mount a BuildPro™ plate to the side of the table, or use the blocks to mount BuildPro™ Plates underneath the tabletop to join BuildPro™ Tables together.



| Part No. | Dimension | Description | Weight |
|----------|------------------|---------------------|---------|
| T60105 | 50 x 50 x 150 mm | 4 machined surfaces | 1.29 kg |
| T60110 | 50 x 50 x 200 | 4 machined surfaces | 1.63 |
| T60115 | 50 x 50 x 250 | 4 machined surfaces | 1.97 |
| T60120 | 100 x 100 x 100 | 5 machined surfaces | 3.38 |
| T60125 | 100 x 100 x 200 | 5 machined surfaces | 5.67 |
| T60130 | 100 x 100 x 300 | 5 machined surfaces | 7.83 |

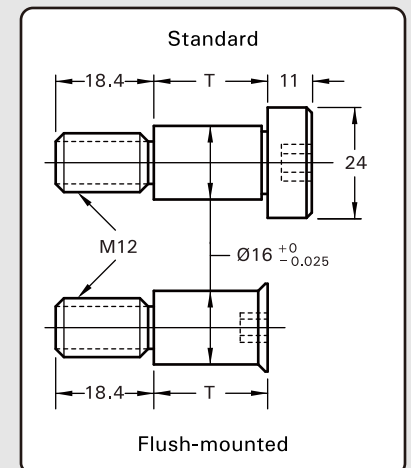


Socket Shoulder Screws Set



These precision shoulder screws fit into the table holes and can hold and position BuildPro™ accessories and other components. Provided with a nut and washer. Choose from standard and flush-mounted versions.

| Part No. | Type | (T) | Thread | Weight |
|----------|----------|-------|--------|---------|
| T931607 | Standard | 20 mm | M12 | 0.07 kg |
| T931608 | Standard | 22 | M12 | 0.07 |
| T931610 | Standard | 25 | M12 | 0.08 |
| T932607 | Flush | 20 | M12 | 0.04 |
| T932608 | Flush | 22 | M12 | 0.05 |
| T932610 | Flush | 25 | M12 | 0.05 |

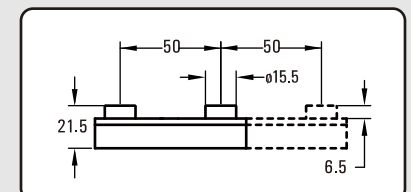
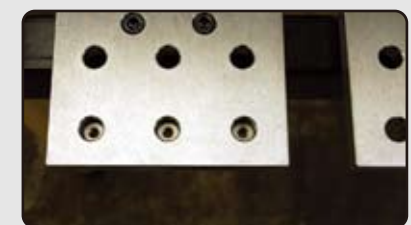


Threaded Adaptors - Unique



Convert any hole in the table into threaded hole. Easy install - Push the Threaded Adaptor in from beneath the plates. Magnets help hold threaded adaptor in place.

| Part No. | Description | Threaded Holes | Magnets | Weight |
|----------|----------------|----------------|---------|---------|
| TXT6204 | 2 hole adaptor | M10 | 1 | 0.11 kg |
| TXT6205 | 2 hole adaptor | M12 | 1 | 0.11 |
| TXT6304 | 3 hole adaptor | M10 | 2 | 0.26 |
| TXT6305 | 3 hole adaptor | M12 | 2 | 0.26 |

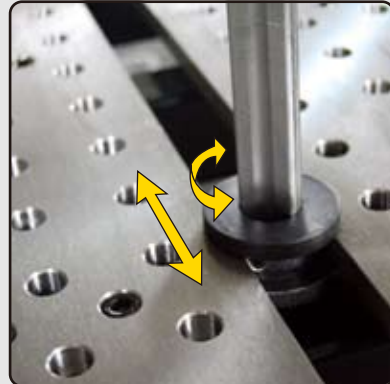


360° BuildPro™ Clamps - *Unique*



Precision machined, steel base of the 360° Slot Clamp slides into the 40mm spacing which enables the clamp body to slide along the entire surface & swivel 360° for positioning at any point.

| Part No. | Capacity | Throat Depth | Clamping Pressure | Rail Size | Weight |
|----------|----------|--------------|-------------------|-------------|---------|
| T61405 | 200 mm | 120 mm | 230 kg | 22 X 11 mm | 1.58 kg |
| T61510 | 300 | 120 | 270 | 25.4 X 11.9 | 2.16 |
| T61615 | 500 | 140 | 320 | 32 X 14 | 3.69 |



Inserta Clamps

These clamps are designed to fit into the BuildPro™ Table holes for fast and easy clamping.

| Straight Handle | Ratchet Handle | Wood Handle |
|--------------------|----------------|----------------------|
| | | |
| UDN6150 UEN6200 | UERN6200 | UDWN6150 UEWN6200 |

| Part No. | Capacity | Throat Depth | Clamping Pressure | Rail Size | Weight |
|----------|----------|--------------|-------------------|-----------|---------|
| UDN6150 | 150 mm | 83 mm | 135 kg | 16 X 8 mm | 0.54 kg |
| UEN6200 | 200 | 100 | 180 | 20 X 10 | 0.99 |
| UERN6200 | 200 | 100 | 180 | 20 X 10 | 0.99 |
| UDWN6150 | 150 | 83 | 135 | 16 X 8 | 0.59 |
| UEWN6200 | 200 | 100 | 180 | 20 X 10 | 1.04 |



360° & Inserta Clamps Accessories

Top V-Pad



The optional clip-on top V-pad for clamping round parts or 2 parts at once.

| Part No. | Description | Weight |
|----------|--|---------|
| XDA2 | For Inserta-Clamps UDN6150 & UDWN6150 | 0.09 kg |
| XFA2 | For Inserta-Clamps UEN6200, UERN6200 & UEWN6200 For 360° Clamps T61405 & T61510 | 0.18 |
| XMA2 | For 360° Clamp T61615 | 0.27 |

Sidekick



Slide onto the 360° BuildPro™ clamp body for horizontal clamping force.

| Part No. | Description | Stroke | Weight |
|----------|-------------|--------|---------|
| XFSM | For T61405 | 30 mm | 0.59 kg |
| XGSM | For T61510 | 30 | 0.58 |
| XMSM | For T61615 | 30 | 0.54 |

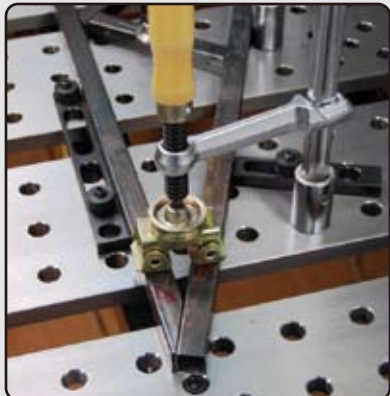
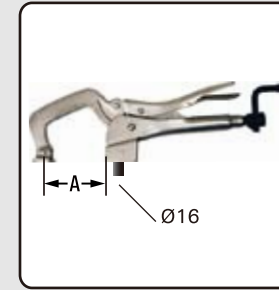


Table Mount C-Clamps



Insert into any hole on the tabletop or Right Angle Plate for quick push down clamping. Use the crank handle for rapid tightening.

| Part No. | Throat Depth (A) | Max. Capacity | Weight |
|----------|------------------|---------------|---------|
| PT11K | 85 mm | 100 mm | 0.72 kg |
| PT14K | 155 | 120 | 0.90 |



Chain Pliers & Table Mount Base



Hold two or more large, oddly shaped materials with the 600mm chain. Adjust the clamp opening and torque with the crank handle. Use the optional Table Mount Base to mount the clamp onto the table.

| Part No. | Description | Weight |
|----------|--|---------|
| PC924 | Chain Pliers with 600mm Chain | 0.86 kg |
| PXC90 | Optional Table Mount Base Plates (2 pcs) | 0.50 |
| PXC96 | Copper Grounding Pad | 0.20 |
| PXC97 | Stainless Steel Pad | 0.20 |
| PXC98 | Aluminum Soft Pad | 0.10 |
| PXC36 | Optional replaceable 900mm Chain | 0.45 |



Copper Grounding Pad Stainless / Aluminum Pads

Forged Adjusta-Clamps



Rugged, forged steel clamp fits into holes of the BuildPro™ table and accessories. Instant height adjustment without blocks or shims. One piece assembly allows quick setups and eliminates lost clamp pieces.

| Part No. | Thread | Max. Capacity | Weight |
|----------|--------|---------------|---------|
| T950745 | M10 | 44 mm | 0.32 kg |
| T950755 | M12 | 52 | 0.54 |



Cam-Action Clamps



Pivoting-nose edge clamp operated by a cam handle for fast action. Turn handle 90° to lock. Extended base allows position adjustments.

| Part No. | Stud | Height | Base Length | Weight |
|----------|------|---------|-------------|---------|
| 950295 | M8 | 41.4 mm | 80 mm | 0.32 kg |
| 950305 | M12 | 63.5 | 120 | 0.99 |

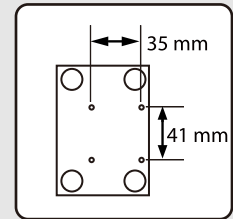


Toggle Clamps

Push-Pull & Hold Down Action Toggle Clamps. Visit us at www.goodhandinc.com for a complete listing.



| Part No. | Description | Tapped hole | Clamping Pressure | Weight |
|----------|-------------|-------------|-------------------|---------|
| GH-12130 | Horizontal | M6 | 225 kg | 0.35 kg |
| GH-36070 | Push / Pull | M5 | 45 | 0.09 |
| GH-302-F | Push / Pull | M5 | 135 | 0.30 |



Toggle Clamp Attachment Plate

Use the attachment plate to secure toggle clamps.
*Pretapped holes fit GH-302-F. Users can tap additional holes.

| Part No. | Dimension | Hole | Tapped hole | Weight |
|----------|------------------|------------|-------------|---------|
| T61110 | 125 x 75 x 12 mm | 4 x Ø16 mm | 4 x M5 | 2.58 kg |

MagSpring Clamps



The spring-loaded, one-handed clamp with quick-set, magnetic V-Pad. Quick and easy to use! Squeeze to open, set in position and turn to tighten. 225 kg clamping pressure.

| Part No. | Capacity | Throat Depth | Weight |
|----------|----------|--------------|---------|
| UDV45M | 90 mm | 83 mm | 0.45 kg |
| UDV65M | 140 | 83 | 0.50 |

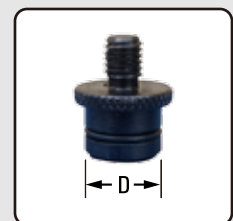
Magnetic Rest



25.4 mm magnetic rest. Designed for use on any flat surface, and can also be inserted into holes of BuildPro™ table and accessories.

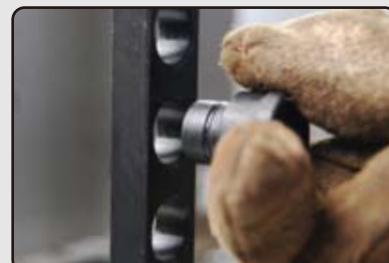
| Part No. | Dimension (D) | (D) | Weight |
|----------|---------------|--------|---------|
| T65410 | Ø25 x 25.4 mm | Ø16 mm | 0.03 kg |

Connector



Use the connector to attach Strong Hand Tools™ Pliers and Clamps to the table & other BuildPro™ accessories.

| Part No. | (D) | Thread | Weight |
|----------|----------|--------|---------|
| T54605 | Ø15.9 mm | M8 | 0.03 kg |



Adjustable Magnetic Spacers

Magnetic base holds securely to the table. Turn the screw clockwise or counterclockwise to set the top rest at the desired height. For increased height, add your own standard M10 hex screw of desired length.



| Part No. | Adjustable Range | Diameter | Thread | Weight |
|----------|------------------|----------|--------|---------|
| TXS6075 | 18-25 mm | 25 mm | M10 | 0.06 kg |
| TXS6150 | 25-38 | 25 | M10 | 0.09 |
| TXS6250 | 38-62 | 25 | M10 | 0.13 |



V-Blocks



These V-Blocks are ideal for holding round parts. They fit into the holes of the BuildPro™ tables and have a M8 threaded hole in the middle for securing them to the table.

| Part No. | Angle | Dimension | Max. Tube Size | Weight |
|----------|--------------|-------------|----------------|---------|
| T64210 | 90° V-shape | Ø40 x 31 mm | 50mm | 0.15 kg |
| T64215 | 120° V-shape | Ø40 x 26 | 65 | 0.12 |

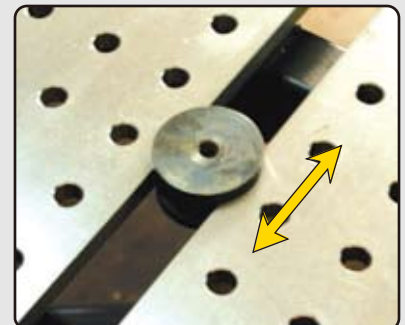


Sliding Channel Bases



Mount workholding devices onto these Sliding Channel Bases. Slide into the 40 mm slots between the plates.

| Part No. | Description | Weight |
|----------|--|---------|
| T61300 | Nonrotatable and without any holes. | 0.68 kg |
| T61305 | Rotatable with M12 threaded hole on one side, M10 on the other side. | 0.63 |

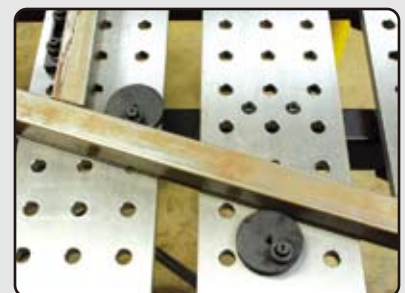


Eccentric Pads



Eccentric Pads provide full surface contact and can be doweled in place after adjustment.

| Part No. | Dimension | Offset | Thread | Weight |
|----------|-------------|--------|--------|---------|
| T64410 | Ø38 x 12 mm | 5 mm | / | 0.09 kg |
| T64415 | Ø63.5 x 12 | 17.5 | M8 | 0.29 |



34 Piece Kit [Part No. TMK610]

| Qty. | Description |
|------|---|
| 12 | Fixed Ball Lock Bolts (4x T65010 & 8x T65015) |
| 10 | Straight Edge Stops (6x T60505 & 4x T60510) |
| 4 | Threaded Adaptors (1x TXT6204, TXT6205, TXT6305, TXT6305) |
| 4 | Inserta-Clamps (4x UDN6150) |
| 2 | Right Angle Plates (4x T60305) |
| 2 | Sliding Channel Base (1x T61300, T61305) |

| | | | |
|--|--|------------------------------------|---|
| Ball Lock Bolts 4 T65010 8 T65015 | Straight Edge Stops 6 T60505 4 T60510 | Inserta-Clamps 4 UDN6150 | Right Angle Plates 2 T60305 |
| | Threaded Adaptors 1 TXT6204 1 TXT6205 1 TXT6304 1 TXT6305 | | Sliding Channel Base 1 T61300 1 T61305 |

71 Piece Kit [Part No. TMK620]

| Qty. | Description |
|------|---|
| 20 | Fixed Ball Lock Bolts (10x T65010, T65015) |
| 4 | Adjustable Ball Lock Bolts (4x T65050) |
| 12 | Straight Edge Stops (4x T60505, T60510, T60505) |
| 4 | Threaded Adaptors (1x TXT6204, TXT6205, TXT6305, TXT6305) |
| 4 | Inserta-Clamps (4x UDN6150) |
| 12 | Right Angle Plates (4x T60304, T60306, T60310) |
| 2 | Sliding Channel Bases (1x T61300, T61305) |
| 2 | 360° Clamps (2x T61405) |
| 3 | Top V-Pads (2x XDA2 & 1x XFA2) |
| 4 | Eccentric Pads (2x T64410, T64415) |
| 4 | V-Blocks (2x T64210, T64215) |

| | | | |
|--|--|---|---|
| Ball Lock Bolts 10 T65010 10 T65015 4 T65050 | Straight Edge Stops 4 T60505 4 T60510 4 T60515 | Inserta-Clamps 4 UDN6150 | 360° Clamps 2 T61405 |
| Threaded Adaptors 1 TXT6204 1 TXT6205 1 TXT6304 1 TXT6305 | Sliding Channel Base 1 T61300 1 T61305 | Right Angle Plates 4 T60304 4 T60305 4 T60310 | Eccentric Pads 2 T64410 2 T64415 |
| | Top V-Pads 2 XDA2 1 XFA2 | V-Blocks 2 T64210 2 T64215 | |

Our Most Popular Kit!

114 Piece Kit [Part No. TMK630]

| Qty. | Description |
|------|--|
| 30 | Fixed Ball Lock Bolts (10x T65010 & 20x T65015) |
| 10 | Adjustable Ball Lock Bolts (10x T65050) |
| 12 | Straight Edge Stops (4x T60505, T60510, T60505) |
| 8 | Threaded Adaptors (2x TXT6204, TXT6205, TXT6304, TXT6305) |
| 4 | Inserta-Clamps (4x UDN6150) |
| 16 | Right Angle Plates (4x T60304, T60305, T60310 & 2x T60320, T60330) |
| 2 | Sliding Channel Base (1x T61300, T61305) |
| 4 | 360° Clamps (2x T61405, T61510) |
| 4 | Top V-Pads (2x XDA2, XFA2) |
| 4 | Eccentric Pads (2x T64410, T64415) |
| 8 | V-Blocks (4x T64210, T64215) |
| 4 | Riser Blocks (2x T60105 & T60110) |
| 2 | MagSpring Clamps (2x UDV45M) |
| 2 | Table Mount C-Clamp (2x PT11K) |
| 4 | Magnetic V-Pads (2x XDV4 & XFA2) |

| | | | | |
|---|--|---|--|--|
| Ball Lock Bolts 10 T65010 20 T65015 10 T65050 | Straight Edge Stops 4 T60505 4 T60510 4 T60515 | Right Angle Plates 4 T60304 4 T60305 4 T60310 2 T60320 2 T60330 | Inserta-Clamps 4 UDN6150 | 360° Clamps 2 T61405 2 T61510 |
| Eccentric Pads 2 T64410 2 T64415 | Top V-Pads 2 XDA2 2 XFA2 | Riser Blocks 2 T60105 2 T60110 | Riser Blocks 2 T60105 2 T60110 | MagSpring Clamps 2 UDV45M |
| V-Blocks 4 T64210 4 T64215 | Sliding Channel Bases 1 T61300 1 T61305 | Magnetic V-Pads 2 XDV4 2 XFA2 | Threaded Adaptors 2 TXT6204 2 TXT6205 2 TXT6304 2 TXT6305 | |
| | Table Mount C-Clamps 2 PT11K | | | |

140 Piece Kit [Part No. TMK640]

| Qty. | Description |
|------|--|
| 30 | Fixed Ball Lock Bolts (10x T65010 & 20x T65015) |
| 10 | Adjustable Ball Lock Bolts (10x T65050) |
| 12 | Straight Edge Stops (4x T60505, T60510, T60505) |
| 16 | Threaded Adaptors (4x TXT6204, TXT6205, TXT6304, TXT6305) |
| 6 | Inserta-Clamps (4x UDN6150 & 2x UEN6200) |
| 16 | Right Angle Plates (4x T60304, T60305, T60310 & 2x T60320, T60330) |
| 4 | Sliding Channel Base (2x T61300, T61305) |
| 6 | 360° Clamps (2x T61405, T61510, T61615) |
| 6 | Top V-Pads (2x XDA2, XFA2, XMA2) |
| 4 | Eccentric Pads (2x T64410, T64415) |
| 8 | V-Blocks (4x T64210, T64215) |
| 8 | Riser Blocks (2x T60105 & T60110, T60120, T60125) |
| 2 | MagSpring Clamps (2x UDV45M) |
| 2 | Table Mount C-Clamps (2x PT11K) |
| 4 | Magnetic V-Pads (2x XDV4 & XFA2) |
| 2 | Magnetic Rests (2x T65410) |
| 2 | Connectors (2x T54605) |
| 2 | Pipe Pliers (2x PG634V) |

| | | | | |
|--|--|---|---|--|
| Ball Lock Bolts 10 T65010 20 T65015 10 T65050 | Straight Edge Stops 4 T60505 4 T60510 4 T60515 | Eccentric Pads 2 T64410 2 T64415 | Right Angle Plates 4 T60304 4 T60305 4 T60310 2 T60320 2 T60330 | Inserta-Clamps 4 UDN6150 2 UEN6200 |
| Threaded Adaptors 4 TXT6204 4 TXT6205 4 TXT6304 4 TXT6305 | Table Mount C-Clamp 2 PT11K | V-Blocks 4 T64210 4 T64215 | Top V-Pads 2 XDA2 2 XFA2 2 XMA2 | 360° Clamps 2 T61405 2 T61510 2 T61615 |
| Connectors 2 T54605 | MagSpring Clamps 2 UDV45M | Pipe Pliers 2 PG634V | Magnetic V-Pads 2 XDV4 2 XFA2 | Sliding Channel 2 T61300 2 T61305 |
| Riser Blocks 2 T60105 2 T60110 2 T60120 2 T60125 | | | Magnetic Rest 2 T65410 | |

164 Piece Kit [Part No. TMK650]

| Qty. | Description |
|------|--|
| 40 | Fixed Ball Lock Bolts (20x T65010, T65015) |
| 10 | Adjustable Ball Lock Bolts (10x T65050) |
| 12 | Straight Edge Stops (4x T60505, T60510, T60505) |
| 16 | Threaded Adaptors (4x TXT6204, TXT6205, TXT6305, TXT6305) |
| 8 | Inserta-Clamps (4x UDN6150 & 4x UEN6200) |
| 16 | Right Angle Plates (4x T60304, T60305, T60310 & 2x T60320, T60330) |
| 4 | Sliding Channel Base (2x T61300, T61305) |
| 6 | 360° Clamps (4x T61405 & 2x T61510, T61615) |
| 6 | Top V-Pads (2x XDA2, XFA2, XMA2) |
| 4 | Eccentric Pads (2x T64410, T64415) |
| 8 | V-Blocks (4x T64210, T64215) |
| 12 | Riser Blocks (2x T60105 & T60110, T60115, T60120, T60125, T60130) |
| 4 | MagSpring Clamps (2x UDV45M, UDV65M) |
| 4 | Table Mount C-Clamps (2x PT11K, PT14K) |
| 4 | Magnetic V-Pads (2x XDV4 & XFA2) |
| 4 | Magnetic Rest (4x T65410) |
| 2 | Connector (2x T54605) |
| 2 | Pipe Pliers (2x PG634V) |

| | | | | |
|---|--|---|---|--|
| Ball Lock Bolts 20 T65010 10 T65015 10 T65050 | Straight Edge Stops 4 T60505 4 T60510 4 T60515 | Eccentric Pads 2 T64410 2 T64415 | Inserta-Clamps 6 UDN6150 2 UEN6200 | 360° Clamps 4 T61405 2 T61510 2 T61615 |
| Threaded Adaptors 4 TXT6204 4 TXT6205 4 TXT6304 4 TXT6305 | Table Mount C-Clamp 2 PT11K 2 PT14K | V-Blocks 4 T64210 4 T64215 | Connector 4 T54605 | Magnetic Rests 4 T65410 |
| Riser Blocks 2 T60105 2 T60110 2 T60115 2 T60120 2 T60125 2 T60130 | MagSpring Clamps 2 UDV45M 2 UDV65M | Top V-Pads 2 XDA2 2 XFA2 2 XMA2 | Sliding Channel 2 T61300 2 T61305 | Pipe Pliers 2 PG634V |
| | | Magnetic V-Pads 2 XDV4 2 XFA2 | Right Angle Plates 4 T60304 4 T60305 4 T60310 | |

Popular
Strong Hand Tools™
used with the BuildPro™:

Adjust-O Magnets

Magnet Squares



The fast and easy way to hold workpieces at 45° & 90°. Turn the magnet OFF while setting up, turn ON when you're ready to work.

Dual Switch 90° Magnet Squares



Two independent On/Off switches provide greater control in set-up with 80 - 150 lbs. of pull force.

Adjustable Angle Magnets



Adjustable angle from 30° - 275°. Turn the handle for setting and locking at the desired angle.

Mini-Magnets



For light duty holding at multiple points, the 2-5/16" mini-magnets fit into tight spots.

See the complete selection of Strong Hand Tools™ Welding Clamps, Magnets, & Pliers at: www.stronghandtools.com

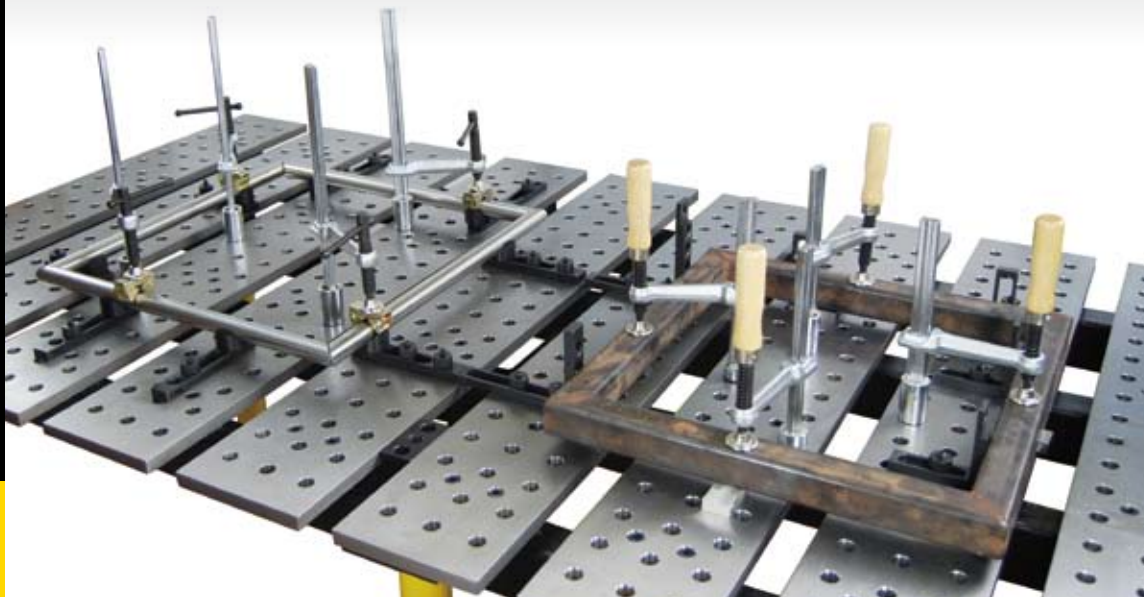
BuildPro™ Framing Applications

► Building Tubular Frames

Customers have told us time and time again - tubular framing is their most common application. So we designed the BuildPro™ Table to support that application, and allow for optimum flexibility in the set-ups for frames large, small, complex, simple and everything in between.



► Rectangular Tube and Pipe Framing



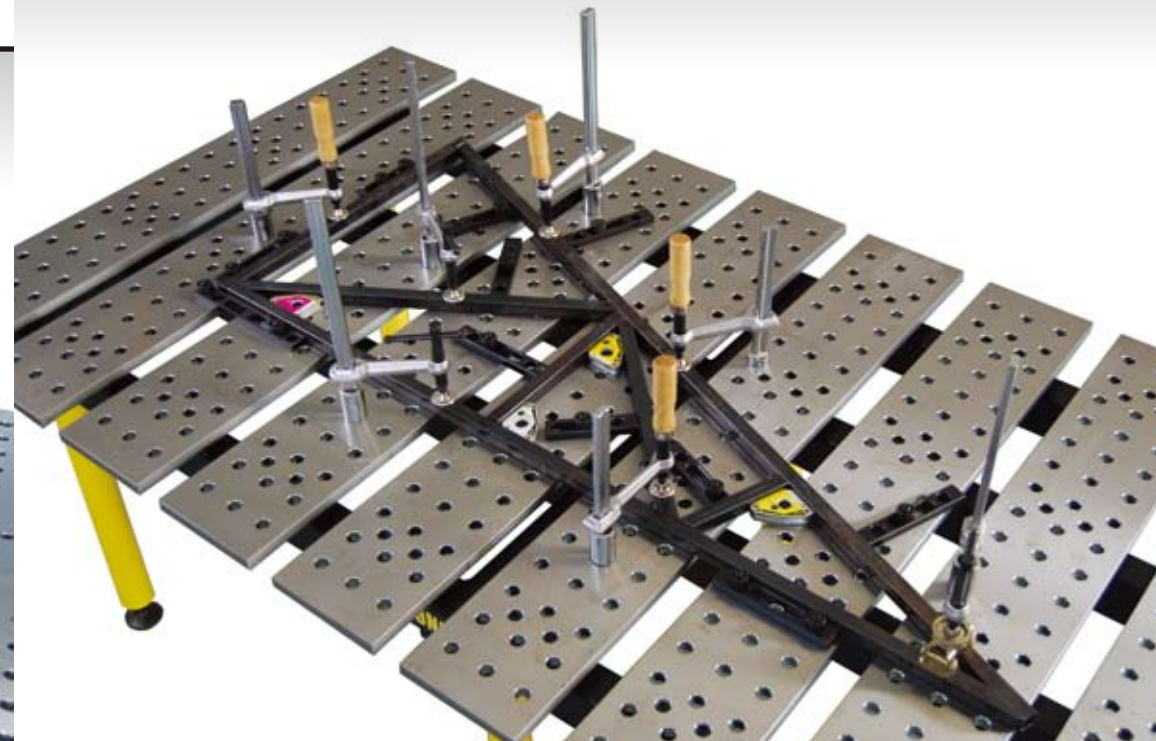
BuildPro™ Applications

► Large Framing

For jobs that require a large work surface, the plates can be reconfigured to fit large framing jobs.



► Truss Frame Construction



Popular
Strong Hand Tools™
used for framing:

3-Axis Fixture Vise



Holds a 3-axis workpiece in position. Features quick acting screws and a swing-away arm for quick and easy part removal.

2-Axis Fixture Vise



The 2-Axis angle clamp can hold 90° corner and T joints. Also available with quick acting screws.

4-IN-1 Clamps



4 functions in 1 clamp! Use as a: 1. Standard Clamp 2. Pipe Clamp 3. Step-Over Clamp 4. Spreader.

Torpedo Mag-Level



The view-anywhere magnetic level. Unique add-on rotatable bubble for second axis leveling.

See the complete selection of Strong Hand Tools™ Welding Clamps, Magnets, & Pliers at: www.stronghandtools.com

Popular
Strong Hand Tools™
used with the BuildPro™:

**JointMaster™
Angle Joining Tools**

PL Series



The PL series is an affordable and precise single-hand corner joining tool. Ideal for quick hold & release.

PT Series



The PT series features a retractable plate for edge alignment and V-grooves for holding round pieces.

PA Series



The PA series is adjustable from 30° - 275°. Simply adjust to the desired angle & lock into position.

Improved Locking C-Clamps



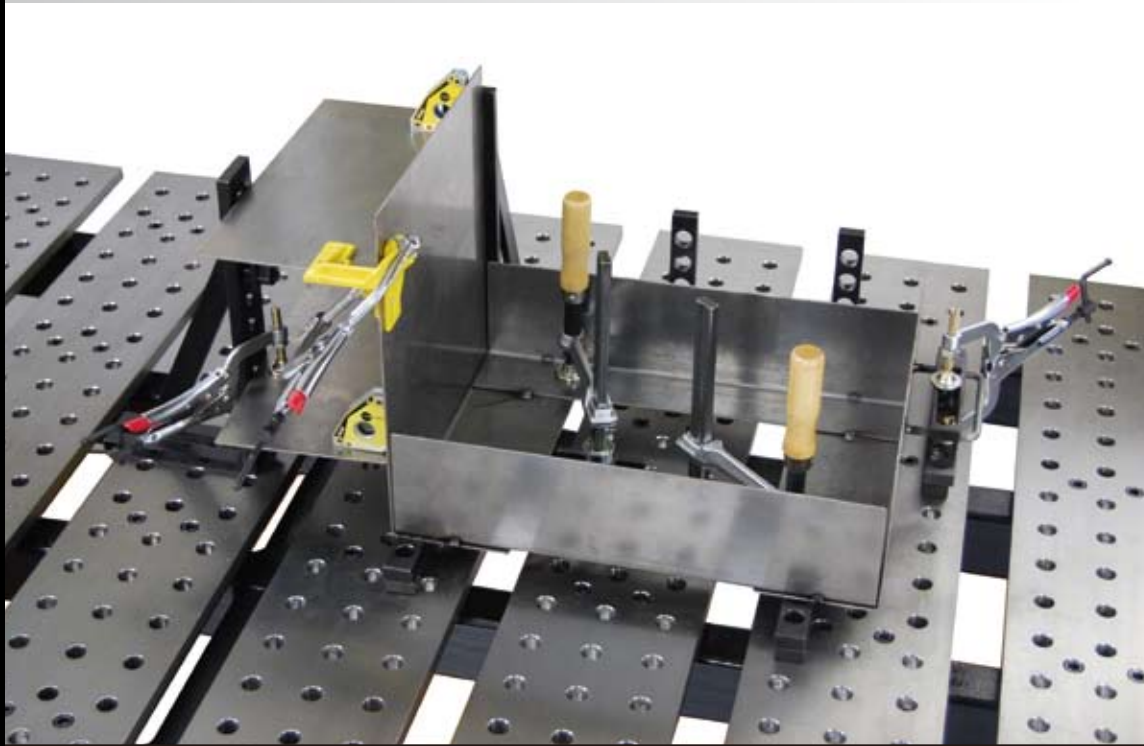
Made of rugged, forged heat treated steel. Updated features help you work quickly, safely and efficiently.

See the complete selection of Strong Hand Tools™ Welding Clamps, Magnets, & Pliers at: www.stronghandtools.com

BuildPro™ Applications

Sheet Metal Construction

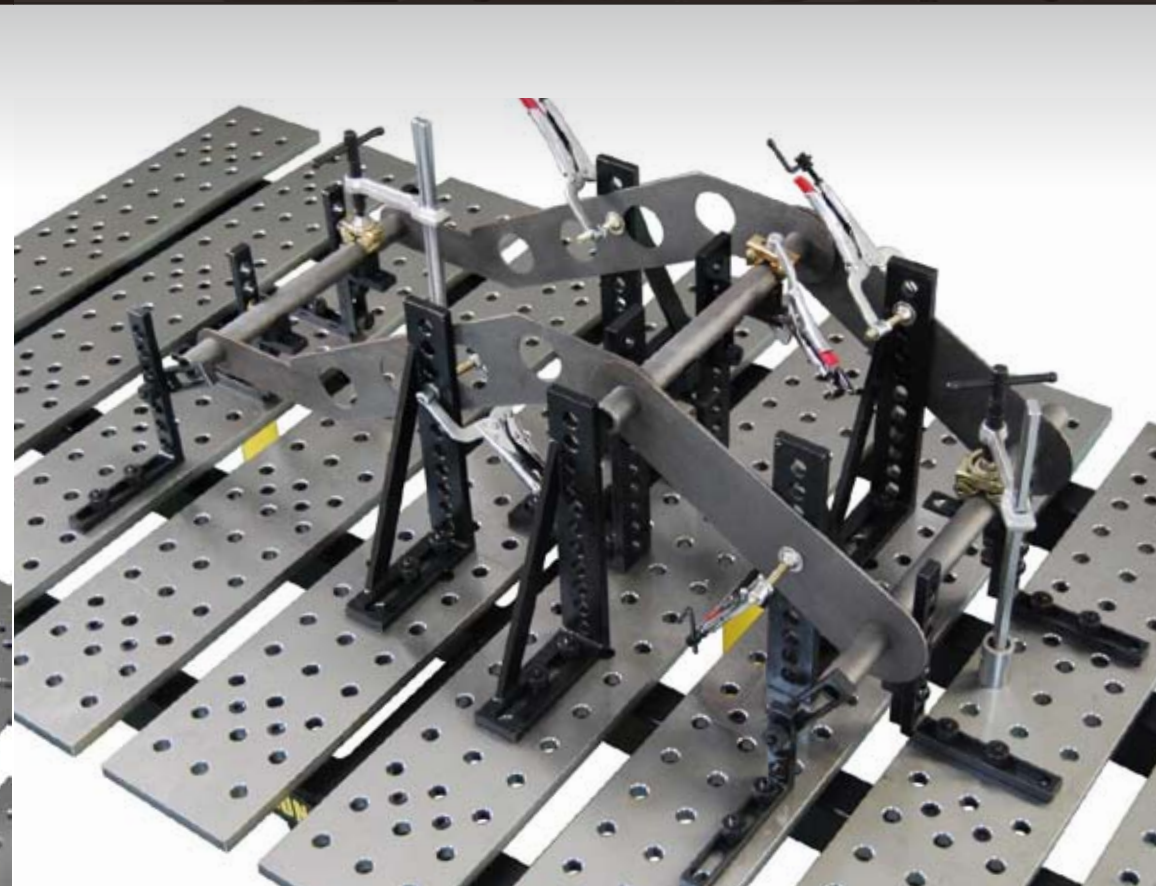
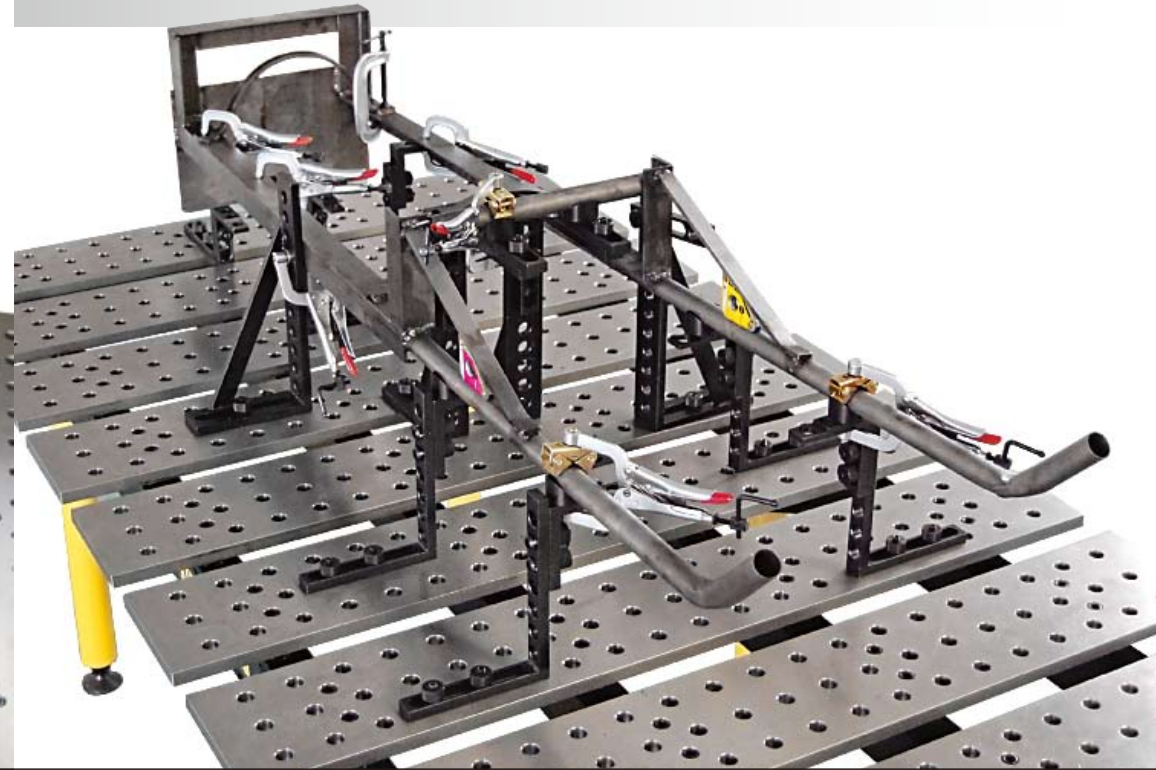
Strong Hand Tools™ work seamlessly with the BuildPro™, which saves you valuable time for repetitive work. Many simple fixturing tools allow for quick set-ups and disassemblies.



BuildPro™ Applications

Assembly Table

Right Angle Plates and Strong Hand Tools™ help you set-up and hold the workpiece in exactly the correct position.



Popular
Strong Hand Tools™
used with the BuildPro™

Multi-Purpose Pliers



One swivel pad spindle, one fixed head spindle allow for flexible hold-down of varying materials.



Use the Multi-Purpose plier with the Connector to hold pliers in place.

MagSpring Clamps



The spring-loaded, one-handed clamp with quick-set, magnetic V-pad. Fast and easy to use!

Pipe Pliers



Hold round parts securely with the Pipe Pliers. Comes with removable top and bottom V-Pads.

See the complete selection of Strong Hand Tools™ Welding Clamps, Magnets, & Pliers at: www.stronghandtools.com